



HYPERLINK Internet PC setup guide

HYPERLINK Internet support helpdesk at 1-866-302-5525.

Congratulations on your new residence and welcome to HYPERLINK Internet service. In a few short moments you will be connected to one of the fastest and most reliable Internet connections available to off-campus housing complexes. Connecting to the Internet is as simple as plugging in your network cable to the port provided in your room, opening your web browser, and following the instructions on the screen.

While the default settings should work in getting you connected to the internet, there are cases where these settings may have changed and it may be necessary to verify that your computer is set up to use the HYPERLINK Internet service. If you are unable to pull up any web pages and are using Windows 98, 2000, XP, Vista, or Windows 7 follow the instructions below to verify that your computer is set up properly.

Please note you will need to provide a 10MB or 10/100MB NIC (Network Interface Card) and an Ethernet cable (Category 5 patch cable) for each workstation you wish to connect to the Internet service.

Contents

Windows 7 **3**

Windows Vista **8**

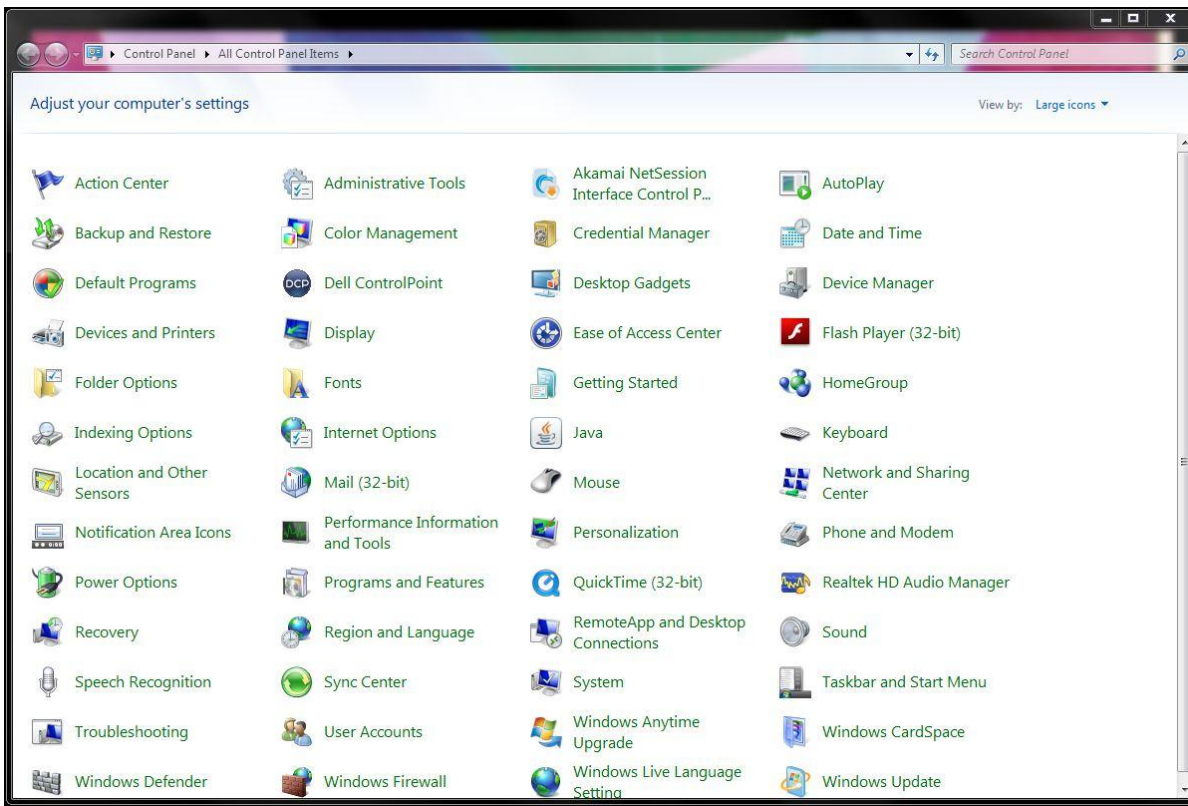
Windows 98, 2000 and XP **11**

MAC OSX Lion **14**

MAC OSX Tiger and prior **16**

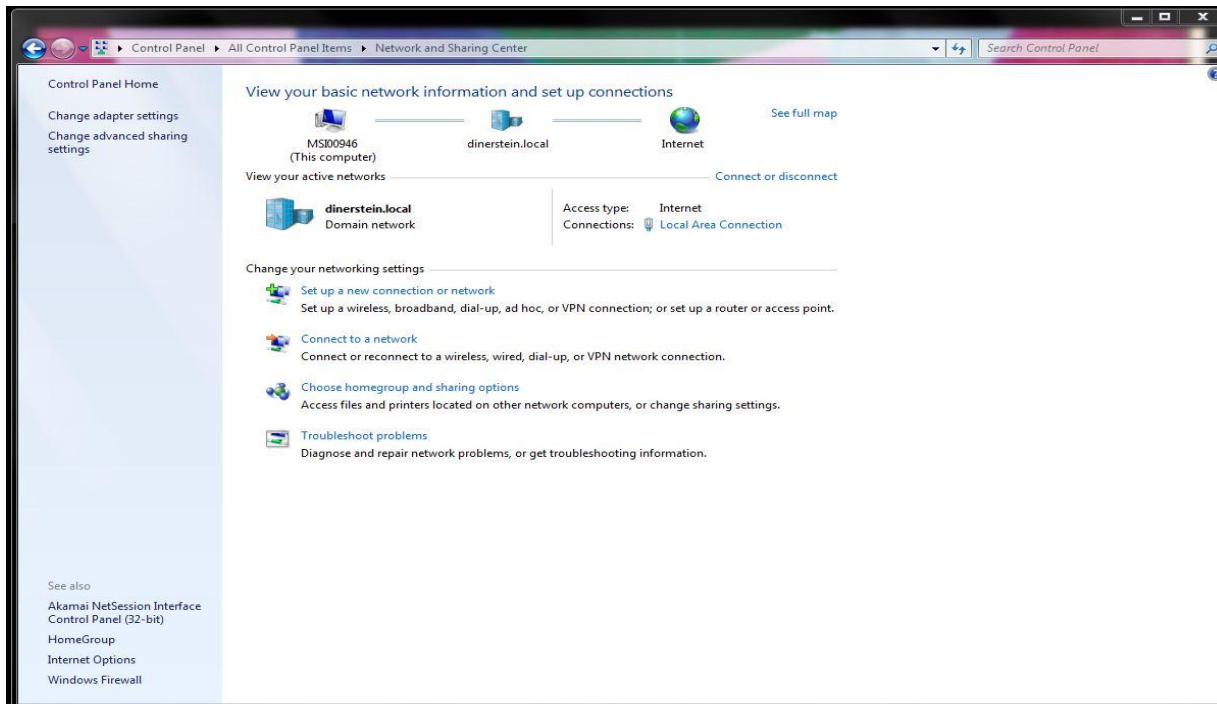
Windows 7

Step 1 Click on start and then click on Control Panel



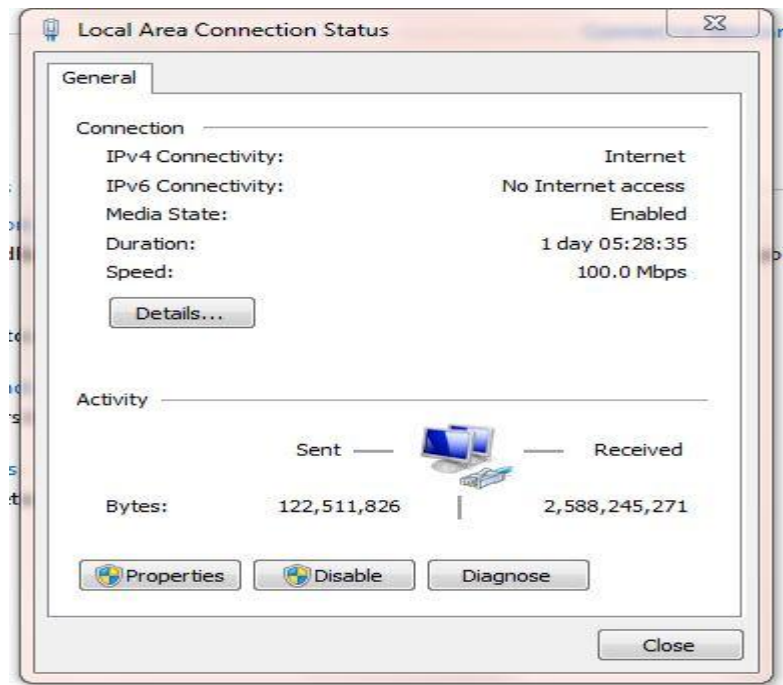
Step 2 Open Network and Sharing Center and then click on local area connection

HYPERLINK Internet PC setup guide



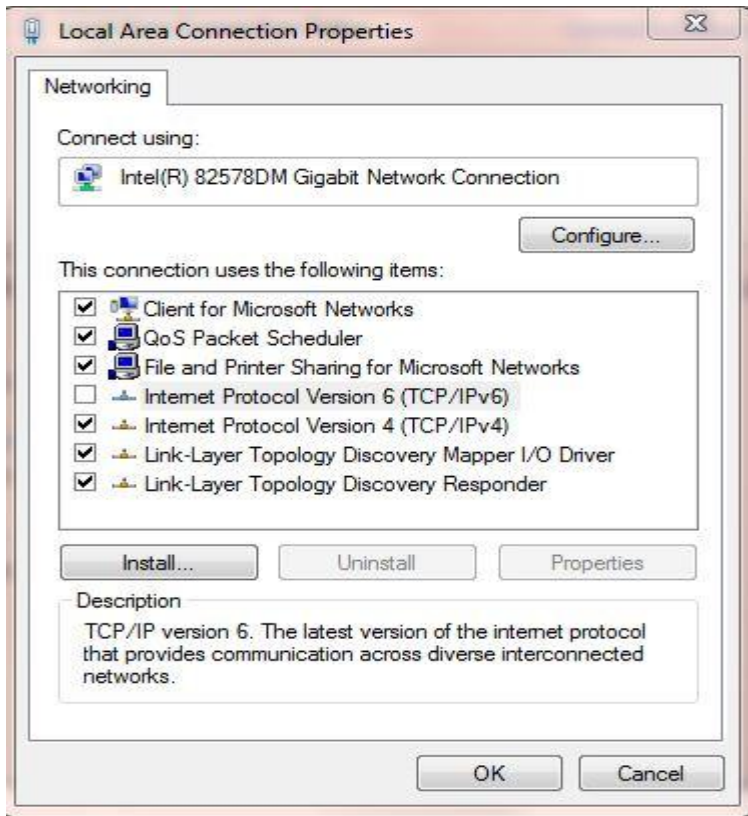
Step 3 Click on Properties

HYPERLINK Internet PC setup guide

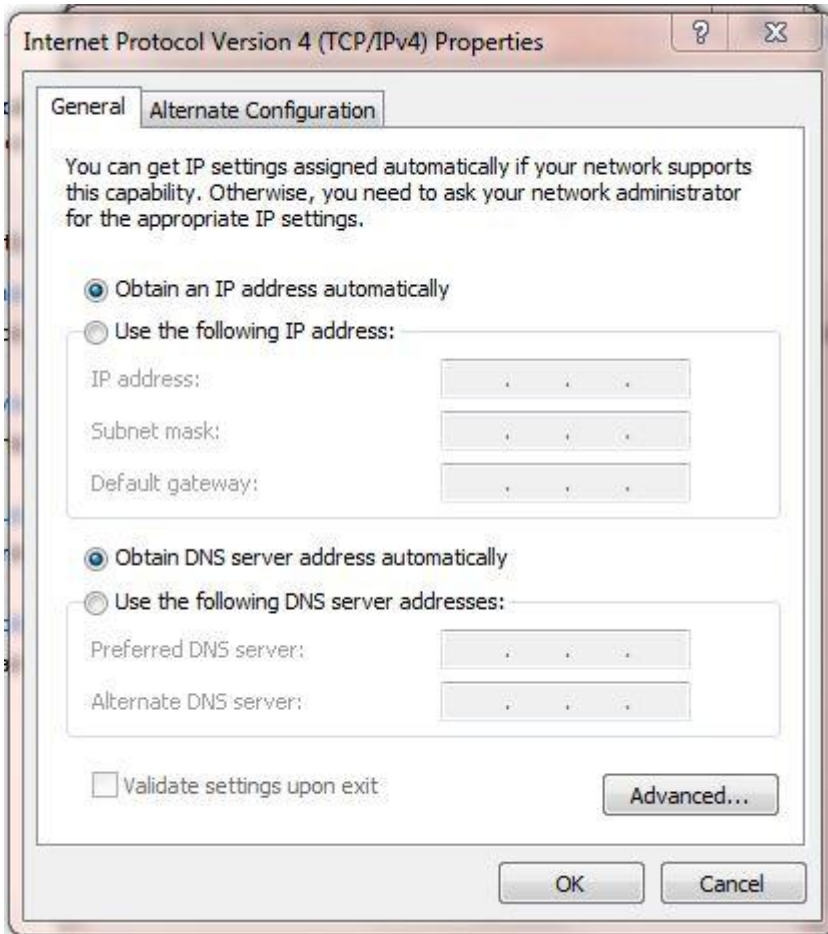


Step 4 Click on Internet Protocol Version 4

HYPERLINK Internet PC setup guide

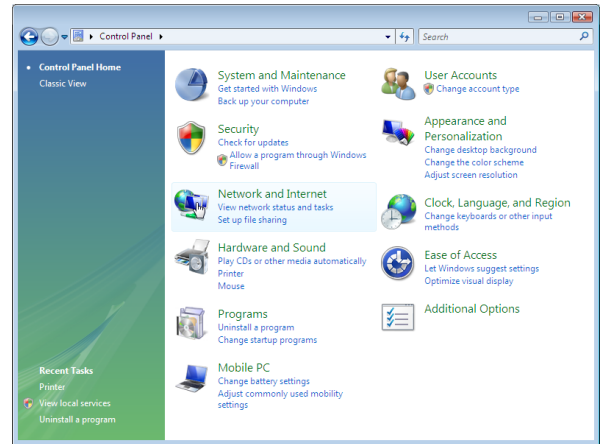


Step 5 Next select Obtain an IP address automatically / Obtain DNS server address automatically

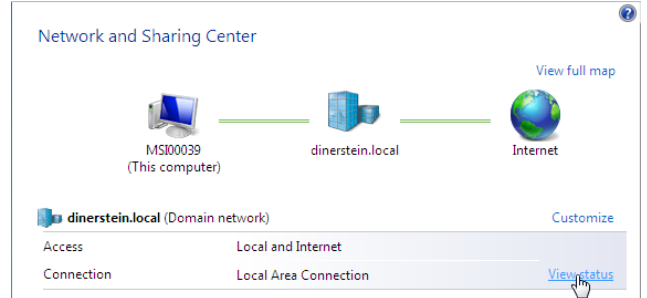


Windows Vista

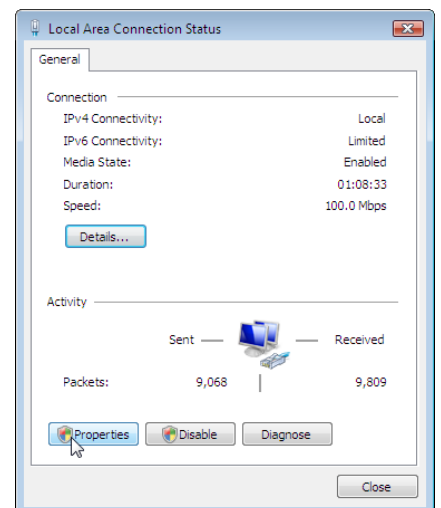
Step 1 Click the Window button, Control Panel, and locate Network and Internet and single click it.



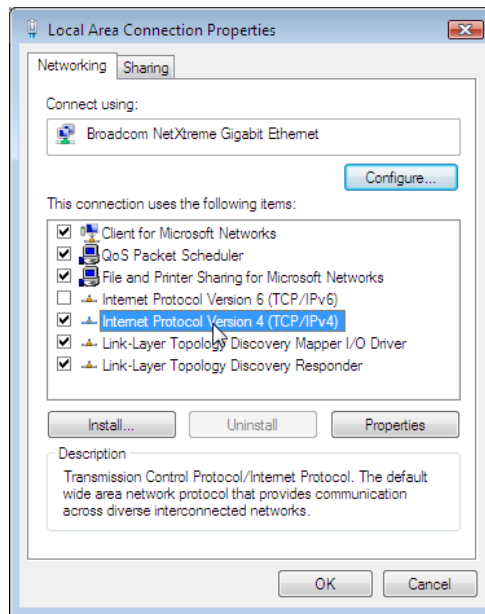
Step 2 Click Network and Sharing Center and locate Local Area Connection. To the left of Local Area Connection click on View Status



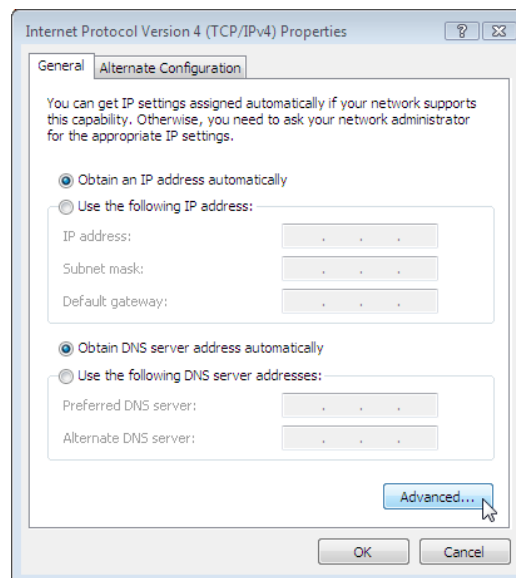
Step 3 The Local Area Connection Status screen will appear. Single click on the Properties button. This will bring up the Local Area Connection Properties screen.



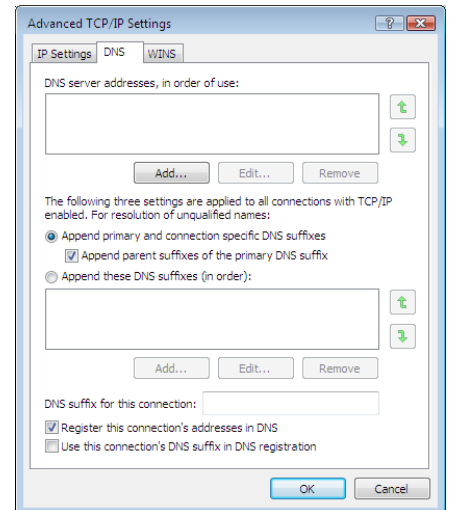
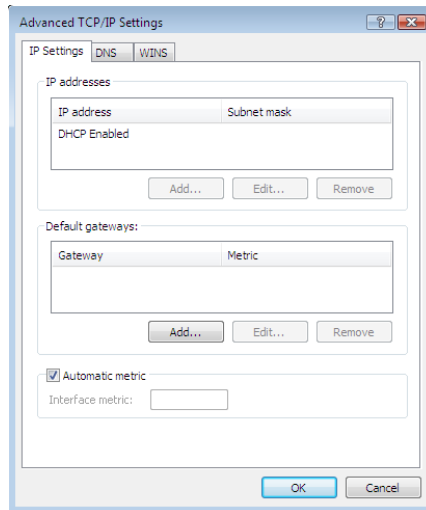
Step 4 Single click the Internet Protocol Version 4(TCP/IPv4) option then single click the Properties button.



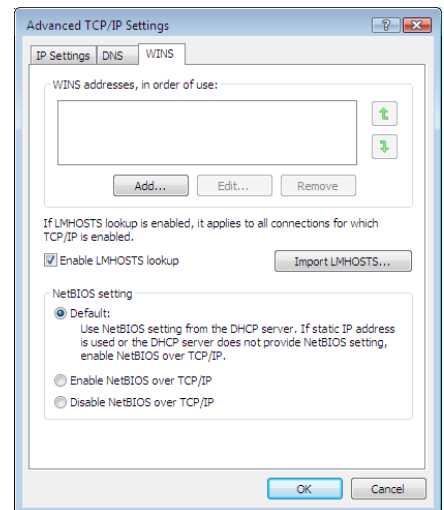
Step 5 Select both the Obtain an IP address automatically and Obtain DNS server address automatically options. This allows your computer to obtain both IP address and DNS server addresses automatically from the HYPERLINK Internet DHCP server. Next single click the Advanced button.



Step 6 Verify that the following network settings are set for the following tabs (IP Setting, DNS & WINS) in the Advanced TCP/IP Settings screen. Then single click OK.

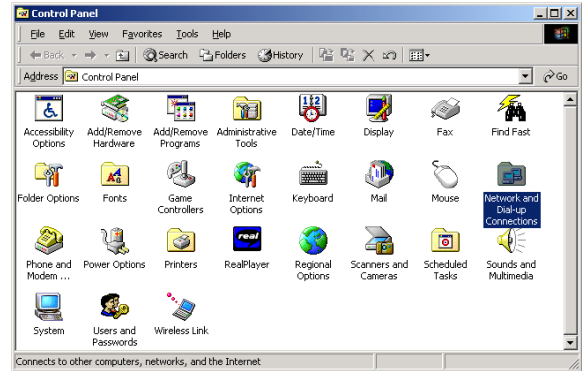


Step 7 At the TCP/IP Properties window single click OK. This will take you back to the Local Area Connection Properties. Single click OK again. This will leave you at the Local Area Connection Status. You can close the remaining windows that are open. Now you will be configured and ready to use the Internet service.

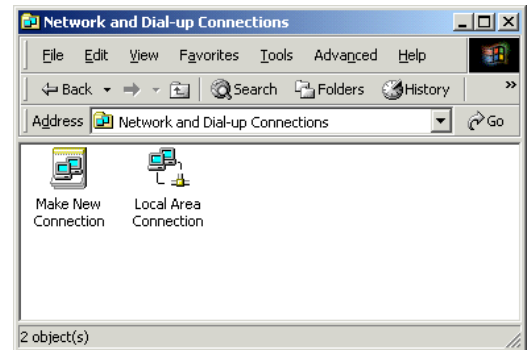


Windows 98, 2000 and XP

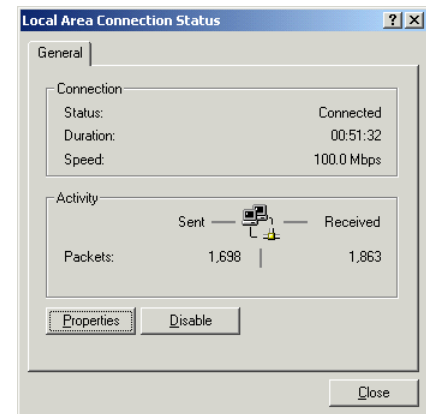
Step 1 Click on START MENU, SETTINGS, and CONTROL PANEL. Locate the NETWORK AND DIALUP CONNECTIONS icon in your Control Panel and double click on it.



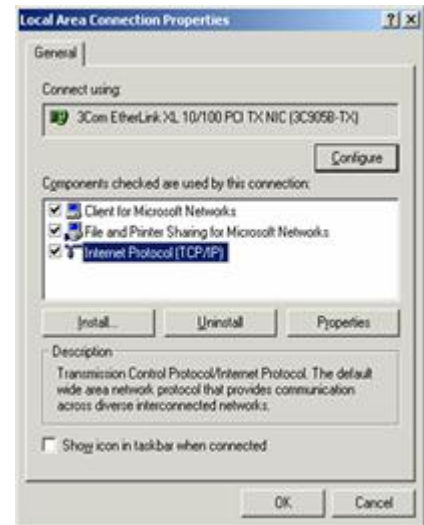
Step 2 A Window labeled Network and Dial-Up Connections at the top left corner will appear. Double click on the Local Area Connection icon.



Step 3 The Local Area Connection Status screen will appear. Single click on the Properties button. This will bring up the Local Area Connection Properties screen.



Step 4 Single click the **Internet Protocol (TCP/IP)** option then single click the **Properties** button.



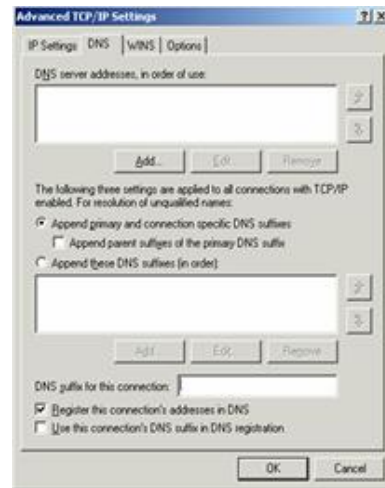
Step 5 Select both the **Obtain an IP address from a DHCP server** and **Obtain DNS server address automatically** options. This allows your computer to obtain both IP address and DNS server addresses automatically from the **HYPERLINK Internet DHCP server**. Next single click the **Advanced** button.



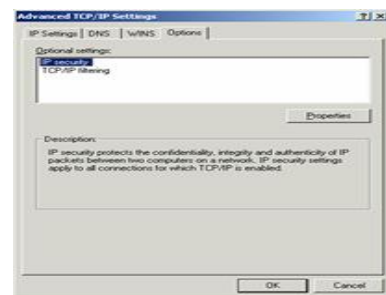
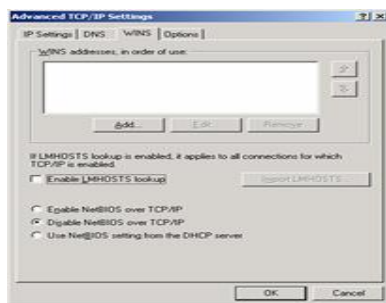
Step 6 Verify that the following network settings are set for the following tabs (IP Setting, DNS & WINS) in the Advanced TCP/IP Settings screen. Then single click



OK



Step 7 At the TCP/IP Properties window single click OK. This will lead you back to the Network window. Single click OK again. Now you will be configured and ready to use the Internet service.



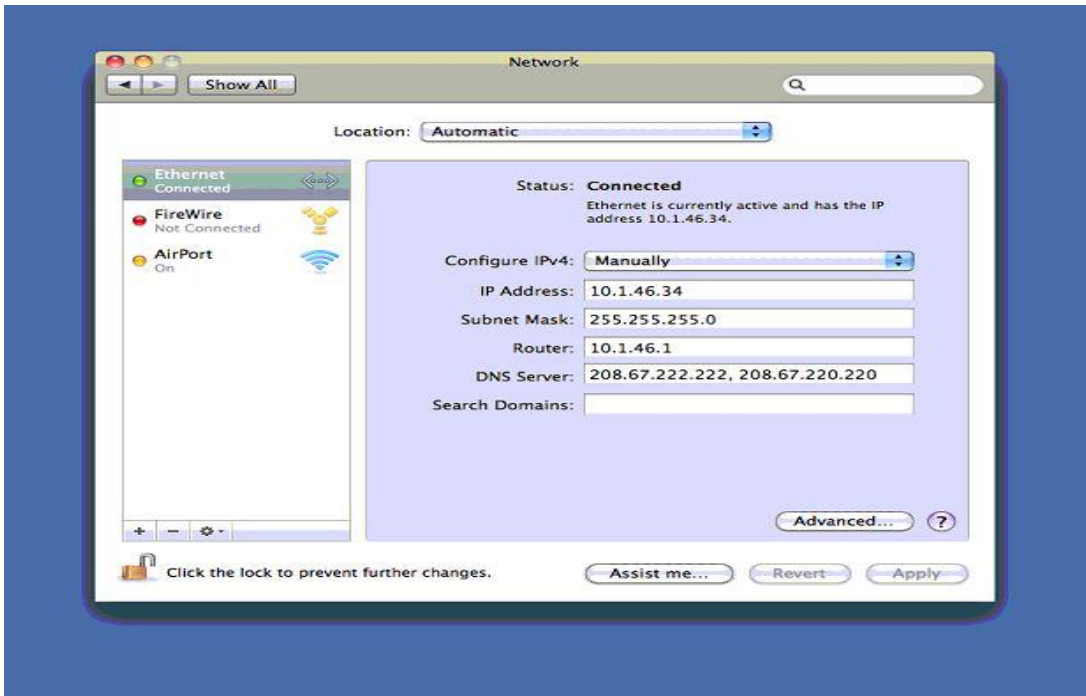
MAC OSX Lion

Step 1 Click on system preference icon on tool bar.



Step 2 Select Network Settings and click drop down arrow on Configure IPV4 select DHCP

Next click on apply and close network window

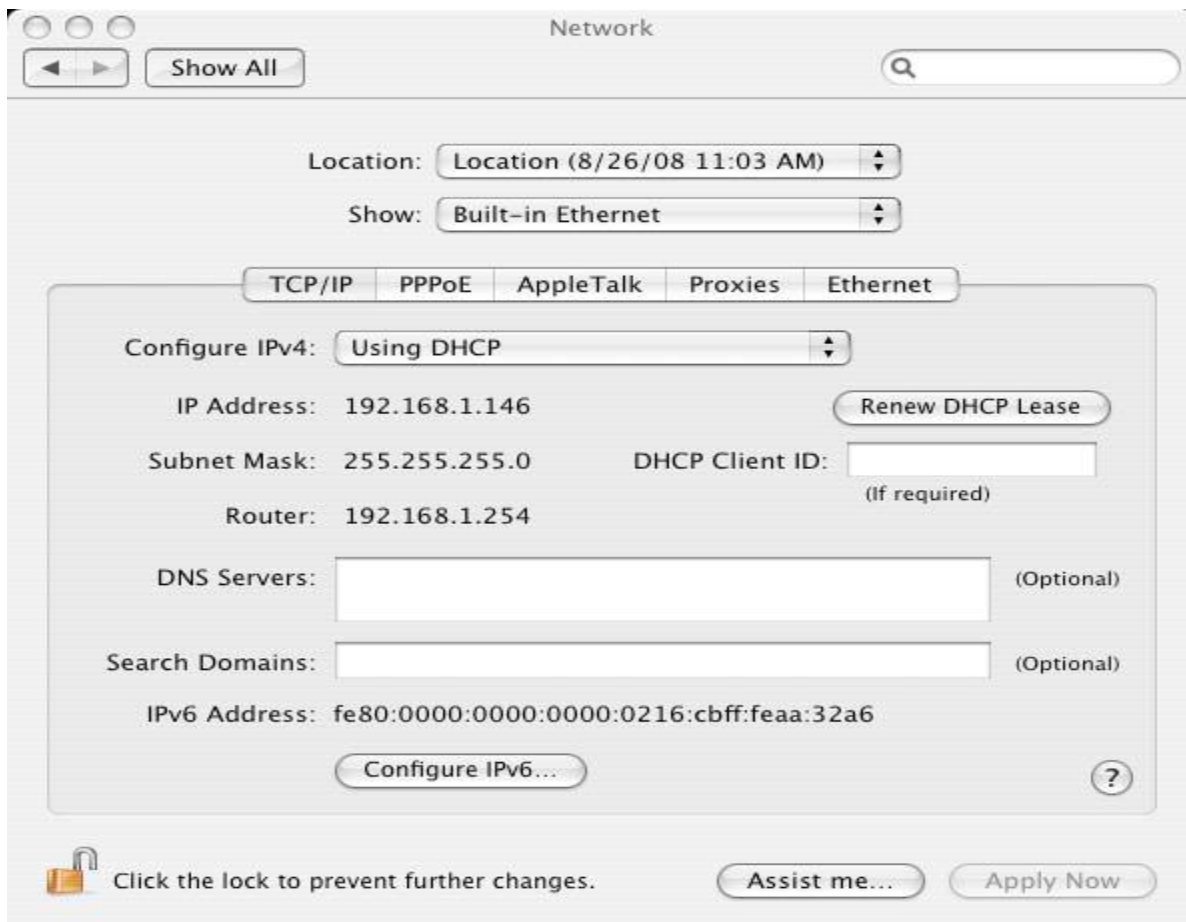


MAC OSX Tiger and prior

The following desktop network configuration was created as an aid to help HYPERLINK Internet Service customers set up standalone Apple Macintosh MAC OS X for use with their Internet service. In this document, HYPERLINK Internet assumes that the end-user knows and understands the basic terms associated with operating systems. Please note you will need to provide a 10MB or 10/100MB NIC (Network Interface Card) and an Ethernet cable (Category 5 patch cable) for each workstation you wish to connect to the Internet services. Step 1 Select the Apple Symbol located at the top left corner of the desktop screen. From the drop down menu select the System Preferences option. Locate the Network icon in your System Preferences screen and click on it.



Step 2 Select the Built-in Ethernet option in the Show field. Then select Using DHCP Server option for the Configure IPv4 field. This allows your computer to obtain both IP address and DNS server addresses automatically from the HYPERLINK Internet DHCP server.



Step 3 If you continue to have problems connecting to the internet after completing these steps please contact the HYPERLINK Internet Support helpdesk at 1-866-302-5525.